



# ALDERLEA

## CAST-IRON OVER STEEL SERIES

**WOOD BURNING STOVES**  
FOR HEATING SMALL TO LARGE SPACES



- ALDERLEA T4
- ALDERLEA T4 CLASSIC
- ALDERLEA T5
- ALDERLEA T5 CLASSIC
- ALDERLEA T6

# ALDERLEA T4

## ALDERLEA T4 CLASSIC

FREESTANDING STOVE

FOR SMALL TO MEDIUM ROOMS



ALDERLEA T4



ALDERLEA T4 CLASSIC – ANTIQUE WHITE

The T4, and the T4 Classic in porcelain enamel, incorporates a huge glass window for a clean view of the flame, warming shelves that swing out to reveal a concealed cook top, efficient heat output and unmatched ease of use. It's a powerful, reliable source of heat with old world charm and unmatched durability.

### Heat Output Cord Wood

## 56,000 BTU

26,300 BTU EPA Test Fuel

EFFICIENCY (LHV)	74%
EMISSIONS	2.9 GM/HR.
LOG SIZE (MAX)	16–18 INCHES
FIREBOX SIZE	1.4 CU.FT.
GLASS SIZE	118 SQ.IN.
WEIGHT	430 LB.

### STANDARD FEATURES

- Reliable, Durable Non-Catalytic Technology
- Floating Firebox for extended stove life
- Multi-Port Combustion Air Injection System
- Airwash Technology for clear, clean glass
- Swing out food warming shelves
- Easy cleaning ash system and chute
- Inside and outside combustion air capable
- Concealed cooktop fits 6" x 13" pan
- Fits close wall clearances without heat shields
- Steel Baffle and 304 Stainless Steel insulation cover
- Mobile Home approved
- East-West loading

### DESIGN OPTIONS

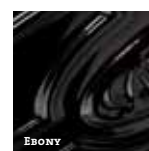
- T4: Metallic black cast iron finish
- T4 Classic: Majolica, Ebony and Antique White porcelain enamel finish

### PERFORMANCE OPTIONS

- Variable-Speed Blower



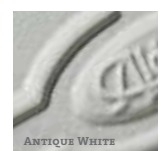
METALLIC BLACK



EBONY



MAJOLICA



ANTIQUE WHITE

# ALDERLEA T5

## ALDERLEA T5 CLASSIC

FREESTANDING STOVE

FOR MEDIUM ROOMS



ALDERLEA T5



ALDERLEA T5 CLASSIC – EBONY

The T5, and the T5 Classic in porcelain enamel, combine the best of cast iron and steel stoves for radiant and convective heat. With a concealed cooktop and a huge glass window for a clean view of the flame, the T5's are easy-to-light, easy-to-use, long-burning wood heaters with old world charm.

### Heat Output Cord Wood

## 72,000 BTU

34,600 BTU EPA Test Fuel

EFFICIENCY (LHV)	80.7%
EMISSIONS	3.4 GM/HR.
LOG SIZE (MAX)	18 INCHES
FIREBOX SIZE	2.2 CU.FT.
GLASS SIZE	138 SQ.IN.
WEIGHT	490 LB.

### STANDARD FEATURES

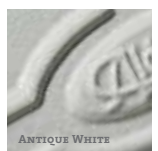
Reliable, Durable Non-Catalytic Technology  
Floating Firebox for extended stove life  
Multi-port combustion air injection system  
Airwash Technology for clear, clean glass  
Swing out food warming shelves  
Easy cleaning ash system and chute  
Inside and outside combustion air capable  
Boost air for easy lighting  
Concealed cooktop fits 9" x 11" pan  
Fits close wall clearances without heat shields  
Steel baffle and 304 Stainless Steel insulation cover  
Mobile Home approved  
North-South loading

### DESIGN OPTIONS

T5: Metallic black cast iron finish  
T5 Classic: Majolica, Ebony, and  
Antique White porcelain enamel finish

### PERFORMANCE OPTIONS

Temperature-Actuated Variable-Speed  
Blower



# ALDERLEA T6

FREESTANDING STOVE

FOR MEDIUM TO LARGE ROOMS



ALDERLEA T6



By wrapping a cast iron profile around Pacific Energy's high-performance steel firebox, the T6 produces radiant and convection heat. It's crafted for maximum heating capacity, with Extended Burn Technology (EBT) for all-night burn times, and features a family-sized cooktop and a huge glass window.

Heat Output Cord Wood

## 99,000 BTU

38,600 BTU EPA Test Fuel

EFFICIENCY (LHV)	80.4%
EMISSIONS	3.9 GM/HR.
LOG SIZE (MAX)	18-20 INCHES
FIREBOX SIZE	3.0 CU.FT.
GLASS SIZE	165 SQ.IN.
WEIGHT	560 LB.

### STANDARD FEATURES

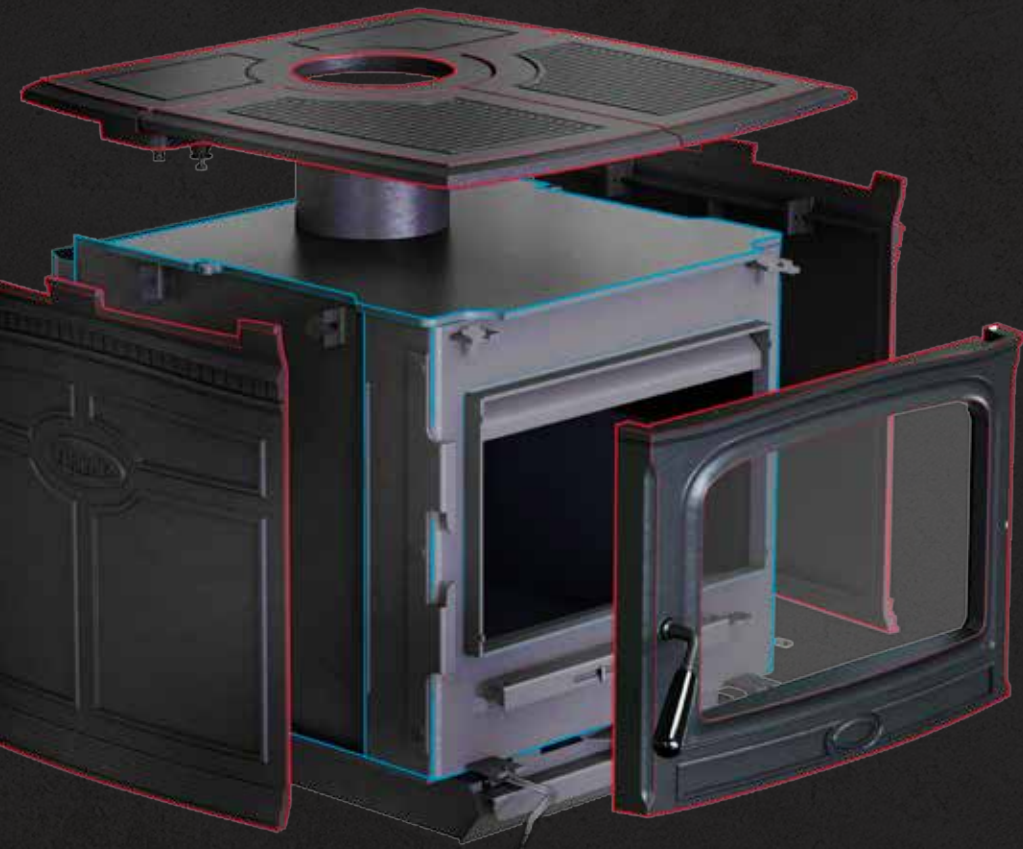
- Reliable, Durable Non-Catalytic Technology
- Floating firebox for extended stove life
- Multi-Port Combustion Air Injection System
- Airwash Technology for clear, clean glass
- Extended Burn Technology (EBT)
- Swing out food warming shelves
- Easy cleaning ash system and chute
- Inside and outside combustion air capable
- Boost air for easy lighting
- Concealed cooktop fits 12" x 15" pan
- fits close wall clearances without heat shields
- Steel baffle and 304 Stainless Steel insulation cover
- Mobile Home approved
- Metallic black cast iron finish
- North-South loading

### PERFORMANCE OPTIONS

- Temperature-Actuated Variable-Speed Blower



METALLIC BLACK



**CAST IRON OVER STEEL**

Until we pioneered the Alderlea line, and its revolutionary iron-wrapped steel firebox, a cast-iron stove was just that: cast iron. The Alderlea design makes the most of each metal: the steel stove and floating firebox is free to expand and contract, and its design maximizes convective heat efficiency, while the cast iron wrapping provides radiant heat. This superior system greatly extends longevity over an all cast stove. Metal fatigue is no longer a factor, allowing us to offer the industry's first lifetime warranty on a cast stove.

This technical innovation lives "under the skin" of the Alderlea line, which maintains the beloved traditional woodstove appearance. We say it's "powered by design, and crafted by tradition".

**BAFFLE SYSTEM**

Pacific Energy is a recognized industry leader in "clean burn" technology, as exemplified in our unique high capacity baffle system for preheating secondary combustion air for re-burning. By burning the combustible elements in the air, we improve our stoves' environmental performance while significantly reducing the amount of wood that is consumed.



**FLOATING FIREBOX**

Our floating firebox system is legendary in the industry. Solidly designed with steel brick-support rails, it allows key parts to freely expand and contract, which reduces metal fatigue and adds years of life to the entire fireplace. The steel baffle (part of the clean-burning secondary combustion system) and the flame shield (which protects the stove top from intense heat) are all part of the floating firebox system.

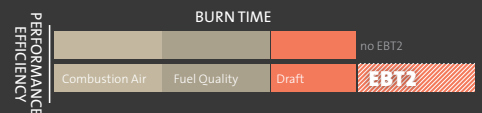
**KNIFE EDGE DOOR**

A formed and welded knife edge opening creates a superior air tight seal to the door while strengthening the stove face. This is a more labor intensive design but our experience has proven this is the best way to manufacture a fireplace.



**EBT2 EXTENDED BURN TECHNOLOGY**

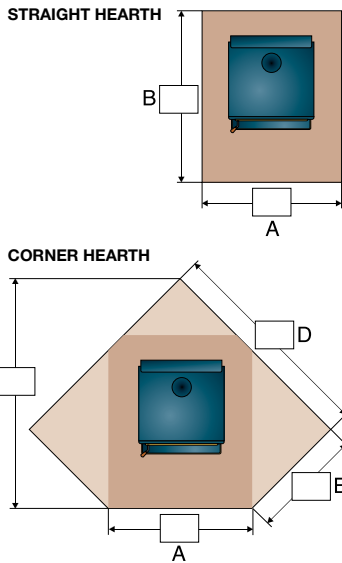
Our second-generation Extended Burn Technology, or EBT2, precisely regulates secondary airflow based on vacuum created by the chimney for a longer, cleaner, more economical burn. This automatically adjusts the secondary combustion system, for a cleaner, more efficient burn and extended burn time.



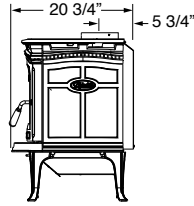
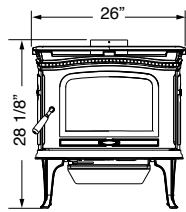
**AIR WASH**  
A SYSTEM BY PACIFIC ENERGY

Pacific Energy developed the first effective airwash manifold system, a design that flows pre-heated air to the glass surface to keep it clean. A refined design now creates a high-pressure zone in the center and forces air to flow from above and across the glass. Even at low air settings, we are confident that our airwash system is the most effective available. And that our glass doors are among the cleanest in the industry.

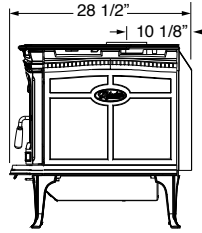
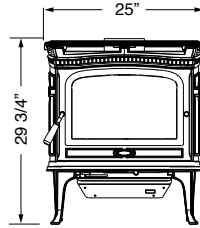
## FLOOR PROTECTOR DIMENSIONS



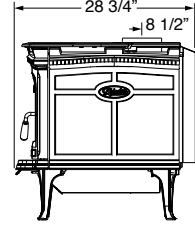
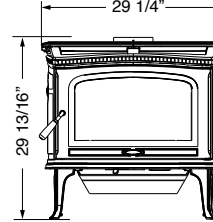
## ALDERLEA T4



## ALDERLEA T5



## ALDERLEA T6



## CANADA

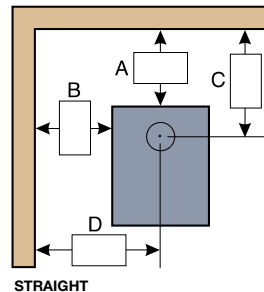
	ALDERLEA T4   T4 CLASSIC					ALDERLEA T5   T5 CLASSIC					ALDERLEA T6				
	A	B	C	D	E	A	B	C	D	E	A	B	C	D	E
Minimum (Not extended)	40"	43 1/4"	-	-	-	40"	50 1/2"	-	-	-	43"	54 3/4"	-	-	-
Residential, single wall, vertical connector	40"	50 1/4"	60 7/8"	57 1/4"	29"	40"	54 1/2"	67 7/8"	62 1/8"	33 7/8"	43"	55 3/4"	66"	62"	31 1/2"
Residential, single wall, horizontal connector	40"	48 1/4"	60 7/8"	57 1/4"	29"	40"	50 1/2"	67 7/8"	62 1/8"	33 7/8"	43"	55 3/4"	66"	62"	31 1/2"
Residential, double wall, vertical connector	40"	42 1/4"	51"	50 1/4"	22"	40"	47 1/2"	58"	55 1/8"	26 7/8"	43"	54 3/4"	64 3/4"	61"	30 1/2"
Alcove, double wall, connector	40"	46 1/4"	-	-	-	40"	52 1/2"	-	-	-	43"	56 3/4"	-	-	-
Mobile home	40"	47 1/4"	58 1/8"	55 1/4"	27"	40"	50 1/2"	63 5/8"	59 1/8"	30 7/8"	43"	56 3/4"	69"	64"	33 1/2"

## USA

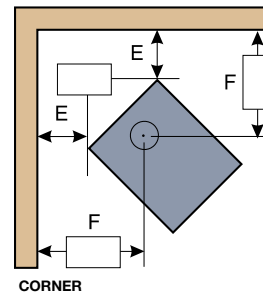
	ALDERLEA T4   T4 CLASSIC					ALDERLEA T5   T5 CLASSIC					ALDERLEA T6				
	A	B	C	D	E	A	B	C	D	E	A	B	C	D	E
Minimum (Not extended)	32"	33 1/4"	-	-	-	34"	40 1/2"	-	-	-	36"	40 1/2"	-	-	-
Residential, single wall, vertical connector	32"	48 1/4"	58 7/8"	53"	30 3/8"	34"	52 1/2"	65 7/8"	58 3/8"	34 1/4"	36"	49 1/2"	60"	54 3/4"	30"
Residential, single wall, horizontal connector	32"	46 1/4"	58 7/8"	53"	30 3/8"	34"	48 1/2"	65 7/8"	58 3/8"	34 1/4"	36"	49 1/2"	60"	54 3/4"	30"
Residential, double wall, vertical connector	32"	40 1/4"	49"	46"	23 3/8"	34"	45 1/2"	55 5/8"	51 3/8"	27 1/4"	36"	48"	58 1/2"	53 3/4"	29"
Alcove, double wall, connector	32"	44 1/4"	-	-	-	34"	50 1/2"	-	-	-	36"	50 1/2"	-	-	-
Mobile home	32"	45 1/4"	56 1/8"	51"	28 3/8"	34"	48 1/2"	61 1/4"	55 3/8"	31 1/4"	36"	50 1/2"	62 3/4"	56 3/4"	32"

## CLEARANCES TO COMBUSTIBLES

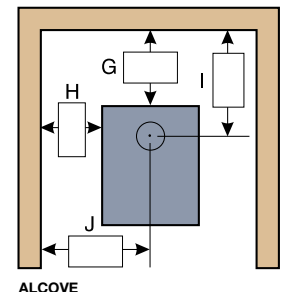
		From top of stove to ceiling	STRAIGHT (VERTICAL CONNECTOR)				STRAIGHT (HORIZONTAL CONNECTOR)				CORNER		ALCOVE			
			A	B	C	D	A	B	C	D	E	F	G	H	I	J
RESIDENTIAL SINGLE WALL CONNECTOR	ALDERLEA T4	56 3/4"	15"	14"	20 3/4"	26"	13"	14"	18 3/4"	26"	10"	22 5/8"	N/A	N/A	N/A	N/A
	ALDERLEA T5	55 1/4"	12"	18"	22"	30"	8"	14"	18"	26"	11"	25"	N/A	N/A	N/A	N/A
	ALDERLEA T6	56 1/2"	9"	14"	17 3/4"	28 3/4"	9"	14"	17 3/4"	28 3/4"	6"	20 1/4"	N/A	N/A	N/A	N/A
RESIDENTIAL DOUBLE WALL CONNECTOR	ALDERLEA T4	56 3/4"	7"	12"	12 3/4"	24"	7"	12"	12 3/4"	24"	3"	15 5/8"	11"	12"	16 3/4"	24"
	ALDERLEA T5	55 1/4"	5"	14"	15"	26"	5"	14"	15"	26"	4"	18"	10"	16"	20"	28"
	ALDERLEA T6	56 1/2"	7 1/2"	13"	16 1/4"	27 3/4"	7 1/2"	13"	16 1/4"	27 3/4"	5"	19 1/4"	10"	16"	18 3/4"	30 3/4"
MOBILE HOME DOUBLE WALL CONNECTOR	ALDERLEA T4	56 3/4"	12"	12"	17 3/4"	24"	N/A	N/A	N/A	N/A	8"	20 5/8"	N/A	N/A	N/A	N/A
	ALDERLEA T5	55 1/4"	8"	16"	18"	28"	N/A	N/A	N/A	N/A	8"	22"	N/A	N/A	N/A	N/A
	ALDERLEA T6	56 1/2"	10"	18"	18 3/4"	32 3/4"	N/A	N/A	N/A	N/A	8"	22 1/4"	N/A	N/A	N/A	N/A



STRAIGHT



CORNER



ALCOVE

